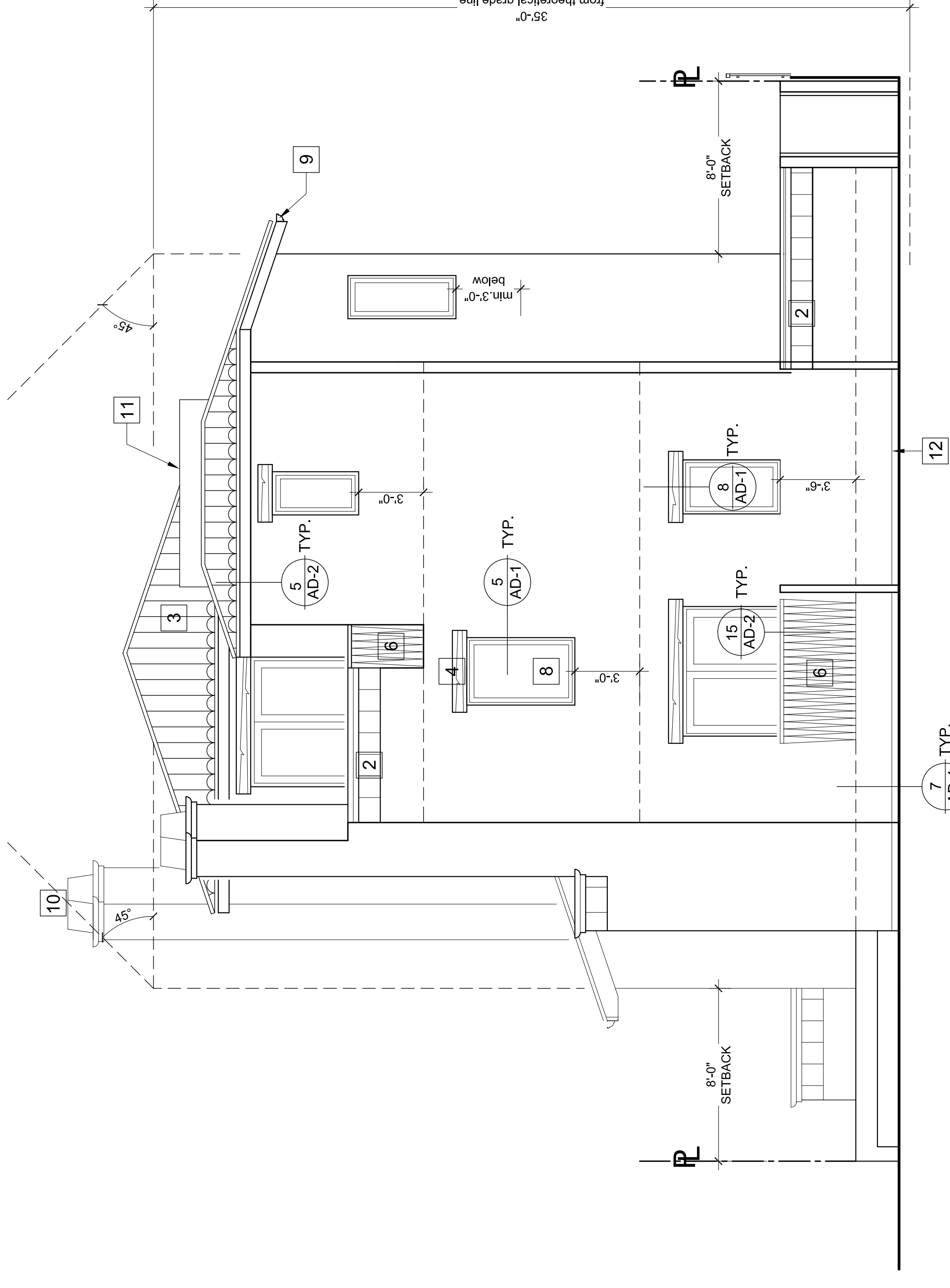
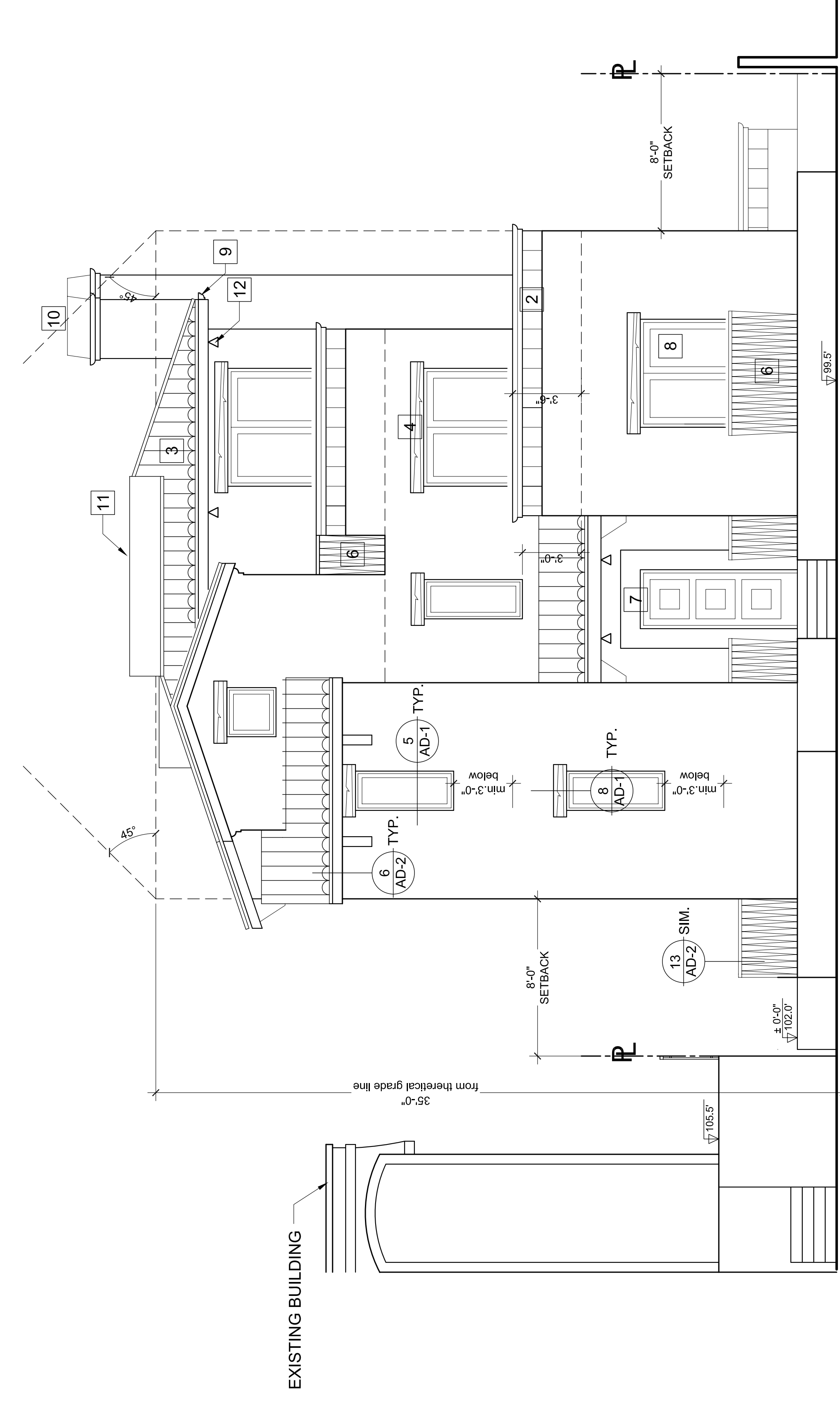


MR. ALI MADANI & MR. HOSEIN ASHTIANI
 5 UNIT CONDOMINIUMS at:
 1327 EUCLID STR., SANTA MONICA, CA-90404



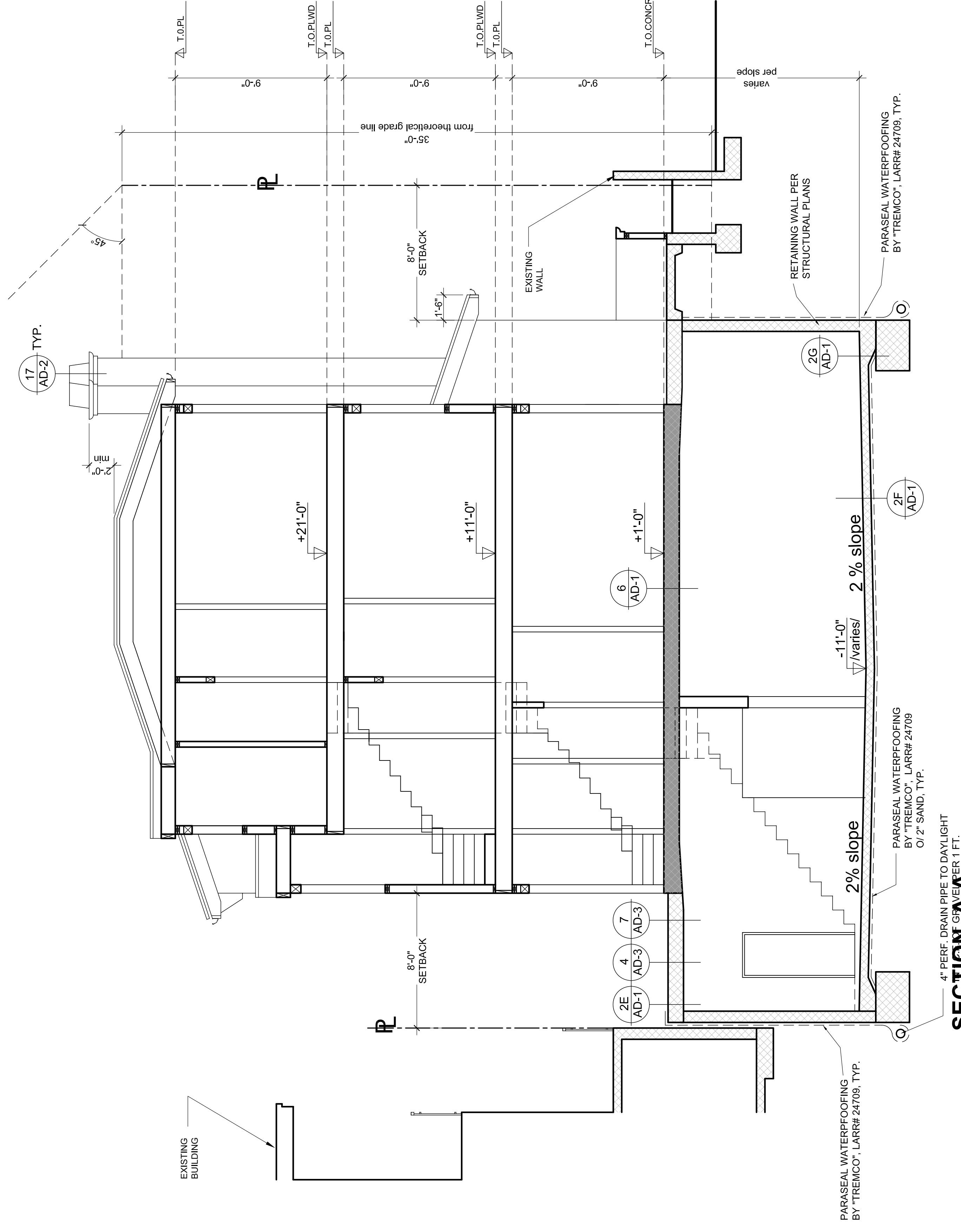
REAR ELEVATION

scale 1/4"=1'-0"



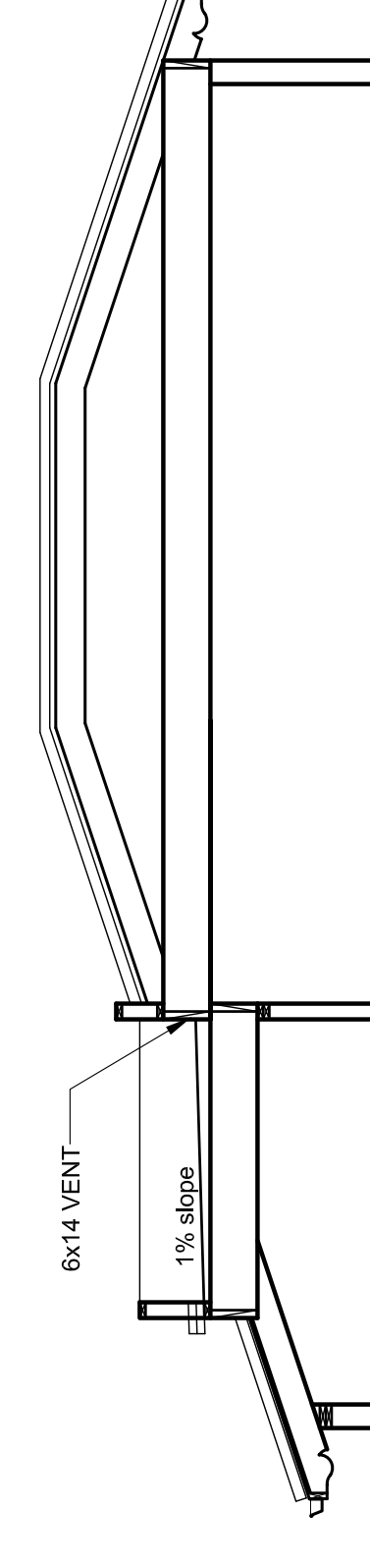
FRONT ELEVATION

scale 1/4"=1'-0"



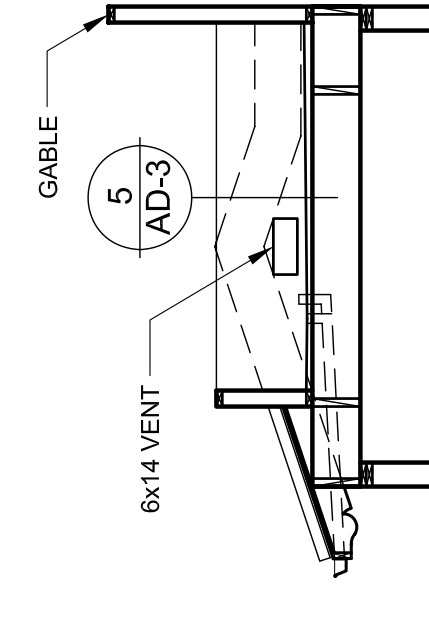
SECTION AA

scale 1/4"=1'-0"



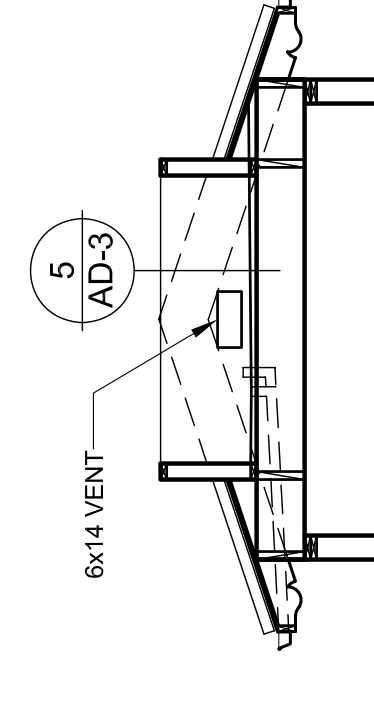
SECTION C-C

scale 1/4"=1'-0"



SECTION D-D

scale 1/4"=1'-0"

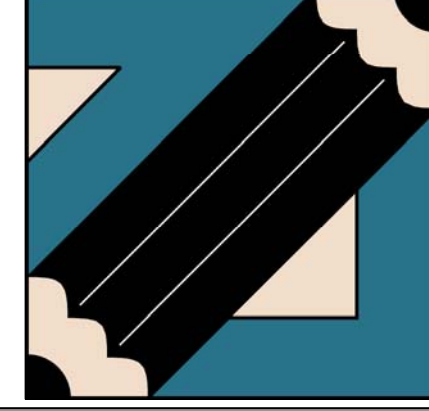


SECTION E-E

scale 1/4"=1'-0"

KEY NOTES

- 1 7/8" SMOOTH TROWEL FINISH EXTERIOR PLASTER
COLOR 448 SANTA FE BY "HIGHLAND STUCCO"
- 2 DECORATIVE CERAMIC TILES COLOR YELLOW GOLD 317
BY "CAL-GA-CRETE"
- 3 SINGLE BARREL CLAY TILE TORINO BLEND BY "US TILE" ER-3523
- 4 DECORATIVE REDWOOD HEATHER
- 5 REDWOOD BMS. & TRELLISES
- 6 W.I. GUARDRAIL FAUX "PATINA" PAINT
- 7 SOLID WOOD DOOR
- 8 WOOD WINDOWS FOR PAINT
- 9 GUTTERS BONDARIZED SHEET METAL
METAL CHIMNEY CAP WITH SPARK ARRESTOR
TO MATCH GUTTERS
- 10 HVAC UNIT PLATFORM
- 11 RECESSED LOW VOLTAGE DOWN LIGHTS BY "NORA"
- 12 CORROSION RESISTANT WEEP SCREED BELOW STUCCO
A MIN 4" ABOVE EARTH OR 2" ABOVE PAVED AREA



L&V architects inc.
 1514 17th Street, Suite 207
 Santa Monica, CA 90404
 Tel: 310. 829. 0996; Fax: 310. 829. 7889

ELEVATIONS &
 SECTION A-A
 title
 08.01.07.
 date
 1/4"=1'-0"
 scale

A-6
 sheet number